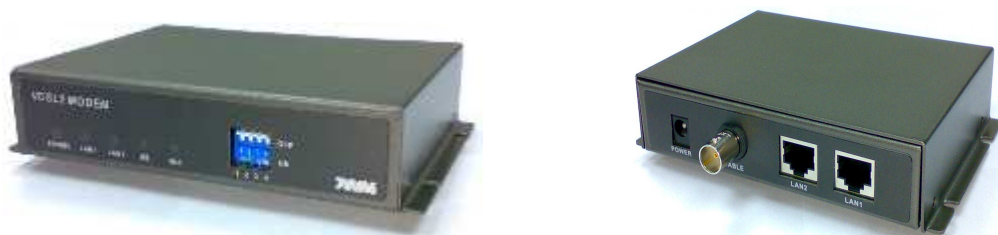


V102M-BNC

100/100Mbps Coax LAN Extender



V102M-BNC is a Coax LAN Extender providing a broadband transmission up to 100/100Mbps for downstream/upstream over coaxial cable for point-to-point Ethernet connectivity. With 100/100Mbps data rate, V102M-BNC supports transmission distance up to 700 meters and less data rate for 3km long range connection. Users may also select a fixed data rate or a fixed SNR margin for different copper line ranging.

With plug and play features and minimum installation time, a pair of V102M-BNC offers a cost effective solution for bandwidth-hungry applications such as video streaming and FTTB over coaxial cable.

Features:

- 100/100Mbps for distance up to 700 meters
- Trellis Coding support up to 1024 Discrete Multi-Tone (DMT) bin
- Supports coax connection up to 3000 meters
- Selectable Fast and Interleaved modes
- Selectable fixed data rate and fixed SNR margin
- Auto MDIX for 10/100 BaseT Ethernet LAN Ports
- 4 Dip Switches for Master/Slave Configurations
- Low-Latency for Video/Voice/Data applications

Technical Specifications:

Coax Transmission:

- ITU-T G.993.1/2, SG15Q4 DMT Compliance
- Trellis Code with 1024 DMT bins
- Max Data Rate: 100/100 Mbps
- BNC Connector x 1

LAN Interface:

- Auto-Detection for 10/100 BaseT and Half/Full duplex
- High performance bridge for Ethernet extension
- Fully compatible with IEEE802.3/IEEE802.3u
- Automatic MDIX Function,
- RJ-45 Connector x 2
- VLAN (hardware optional)

LED Indicators:

- **POWER:** Power is ON **COAX:** Coax Loop
Connection Status
- **LAN1:** Data Activity of LAN Port1 **M/S:** Master/Slave Selection
- **LAN2:** Data Activity of LAN Port2

Physical Dimension:

Desktop: 120 x 90 x 28 (mm)

Power:

12VDC 0.8A

Operating Environment:

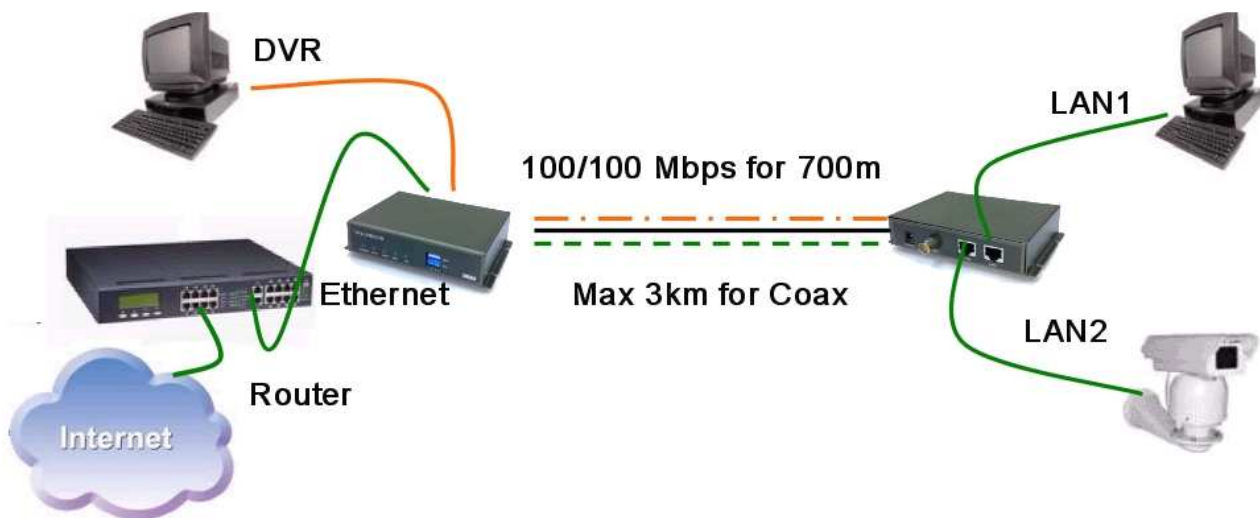
- Humidity: 5% to 95% non-condensing
- Temperature: 0 ~ 50 degree C

Regulatory Compliance:

- FCC Rules Part 15
- CE

Application Diagram:

LAN-to-LAN Extension over DSL Line



Data Rate & Distance:

Down Stream Data Rate (Mbps)	Up Stream Data Rate (Mbps)	Distance (feet)
100	100	2100
100	60	2500
90	44	3000
80	36	4500
70	27	5500
60	18	6000
50	12	7500
40	10	8000
30	3	9500
20	0.5	10000

Ordering Information:

VPS800 : 19-inch 8-Bay Power cabinet
accommodating V102M-BNC x 8 for central management.



V102M-BNC : It shall work in a pair to perform long reach ethernet over coaxial network (EoC).

