

Managed Gigabit PoE Switch PS2460GM



Description

PS2460GM Enterprise Gigabit Ethernet switch with management function is designed to meet rigorous mission critical applications, such as factory automation, intelligent transportation system (ITS), process control and also suitable for many military and utility market applications where environmental conditions exceed commercial product specifications. PS2460GM Gigabit Managed Switches provides a reliable infrastructure for your enterprise automation applications. PS2460GM supports 802.3af/at Power over Ethernet (PoE), with a range of PoE power budgets from 300W to 450W.

PS2460GM supports the Ethernet Ring Protection protocol, recovering time can be less than 20ms, VLAN, QINQ, STP/RSTP, support QOS, ACL multicast, rich two layer exchange function, while providing CLI, Telnet, SSH, Http, Https and other management and network management software based on SNMPv1/v2c/v3. The switch can be managed centrally and conveniently by 'H-View' Element Management System, the whole network equipment can be managed at central office.

Features

- ◆ Comply with IEEE 802.3, 802.3u, 802.3/ab 10/100/1000BASE-T and other international standards
- ◆ IEEE802.3af/at port support standard PoE power supply, power up to 30W maximum power supply
- ◆ Automatic detection and recognition of the receiving equipment in accordance with IEEE802.3af/at standard
- ◆ Support cable fault detection, a key to restart and restore the factory function
- ◆ Comply with CE, FCC and other related standards
- ◆ Support spanning tree (STP), fast spanning tree (RSTP) protocol and multi spanning tree (MSTP) protocol
- ◆ Support VLAN 802.1Q, basic QinQ and flexible QinQ, support up to VLAN 4K table entry
- ◆ Support port aggregation and 1:1 port protection



- ◆ Support IEEE802.3ah, IEEE802.1ag and Y.1731 OAM Management Protocol
- ◆ Support for unified network management and Web Server configuration based on SNMP protocol
- ◆ Support Dying Gasp remote equipment fail alarm
- ◆ Support Ethernet ring network protocol ERPS, support ring protection protocol, protection switching time is less than 20ms
- ◆ Based on port aggregation, linear protection based on G.8031 protocol and the protection of the ring network based on G.8032 protocol;
- ◆ Support port loopback detection and device online upgrade

Specification

Standard

IEEE 802.3	10Base-T 10Mbit/s Ethernet
IEEE 802.3u	100Base-TX, 100Base-FX, Fast Ethernet
IEEE 802.3ab	1000Base-T Gigabit/s Ethernet over twisted pair
IEEE 802.3z	1000Base-X Gigabit/s Ethernet over Fiber-Optic
IEEE 802.1d	STP (Spanning Tree Protocol)
IEEE 802.1w	RSTP (Rapid Spanning Tree Protocol)
IEEE 802.1s	MSTP (Multiple Spanning Tree Protocol)
ITU-T G.8032 /Y.1344	ERPS (Ethernet Ring Protection Switching)
IEEE 802.1Q	Virtual LANs (VLAN)
IEEE 802.1X	Port based and MAC based Network Access Control, Authentication
IEEE 802.3ad	Link aggregation for parallel links with LACP(Link Aggregation Control Protocol)
IEEE 802.3x	Flow control for Full Duplex
IEEE 802.1ad	Stacked VLANs, Q-in-Q
IEEE 802.1p	LAN Layer 2 QoS/CoS Protocol for Traffic Prioritization
IEEE 802.1ab	Link Layer Discovery Protocol (LLDP)
IEEE 802.3af	PoE (Power over Ethernet)
IEEE 802.3at	PoE+ (Power over Ethernet enhancements)

Protocols

IGMPv1/v2/v3, GMRP, GVRP, SNMPv1/v2c/v3, DHCP Server/Client, , TFTP, SNTP, SMTP, RARP, RMON, HTTP, HTTPS, Telnet, Syslog, DHCP Option 66/67/82, SSH, LLDP, IPv6, NTP

Switch Properties

Priority Queues: 8



VLAN ID Range: VID 1 to 4094
IGMP Groups: 2048
MAC Table Size: 8 K
Packet Buffer Size: 4 Mbit
Switching capacity 53G

Interface

RJ45 Ports: 16~24 10/100/1000M Base T adaptive
Fiber Ports: 2~6 100/1000M Base SFP
Console Port: RS-232 (RJ-45)
Button Reset button

PoE

Standard IEEE 802.3at/ 802.3af
Ping Assignment PoE supports (Pin1, 2 for Positive (V+), Pin 3, 6 for Negative(V-))

Certification

EMC CE
EMI (Electromagnetic Interference) FCC Part 15 Subpart B Class A, CE
EMS (Electromagnetic Susceptibility) Protection EN61000-3-2
Level EN61000-3-3
EN61000-4-2 (ESD)
EN61000-4-3 (RS)
EN61000-4-4 (Burst)
EN61000-4-5 (Surge)
EN61000-4-6 (CS)
EN61000-4-8 (PFMF, Magnetic Field) Field Strength
E55032
EN55024
CISPR 32
EN60950-1
FCC PART15B

Operation

Temperature 0 to 55°C
Humidity 10 ~ 90% non-condensing

Power

AC 90~260 VAC (Option)

Dimension



Size(W x H x D) 440 x 44 x 300mm

Software features

VLAN VLAN IEEE 802.1q VLAN, up to 4094 802.1Q VLAN VID
IEEE 802.1q VLAN, up to 4094 Groups
IEEE 802.1ad Q-in-Q
MAC-based VLAN, up to 256 entries
IP Subnet-based VLAN, up to 128 entries
Protocol-based VLAN (Ethernet, SNAP, LLC), up to 128 entries
VLAN Translation, up to 256 entries
GVRP (GARP VLAN Registration Protocol)
MVR (Multicast VLAN Registration)

Link Aggregation Static (Hash with SA, DA, IP, TCP/UDP port), up to 14 trunk group
Dynamic (IEEE 802.3ad LACP), up to 14 trunk group
Per group up-to 8 port

Spanning Tree IEEE802.1d STP, IEEE802.1w RSTP, IEEE802.1s MSTP

Loop Protection Supported

ITU-T G.8032 / Y.1344 Recovery time <20ms

ERPS

QoS

Class of Service IEEE802.1p 8 active priorities queues for per port

Traffic Classification QoS IEEE802.1p based CoS
IP Precedence based CoS
IP DSCP based CoS
QCL(QoS Control List): Frame Type, Source/
Destination MAC, VLAN ID, PCP, DEI
QCE(QoS Control Entry): Protocol, Source IP, IP
Fragment, DSCP, TCP/UDP port number

Bandwidth Control for Ingress Per port based

Bandwidth Control for Egress Per port based Per queue / Per port shaper

DiffServ Remarking

Storm Control Unicast, Broadcast, Multicast

IP Multicasting

IGMP / MLD Snooping IGMP Snooping v1, v2, v3 / MLD Snooping v1, v2 Port Filtering Profile
Throttling, Fast Leave Maximum Multicast Group : up to 1022 entries
Query / Static Router Port



Security

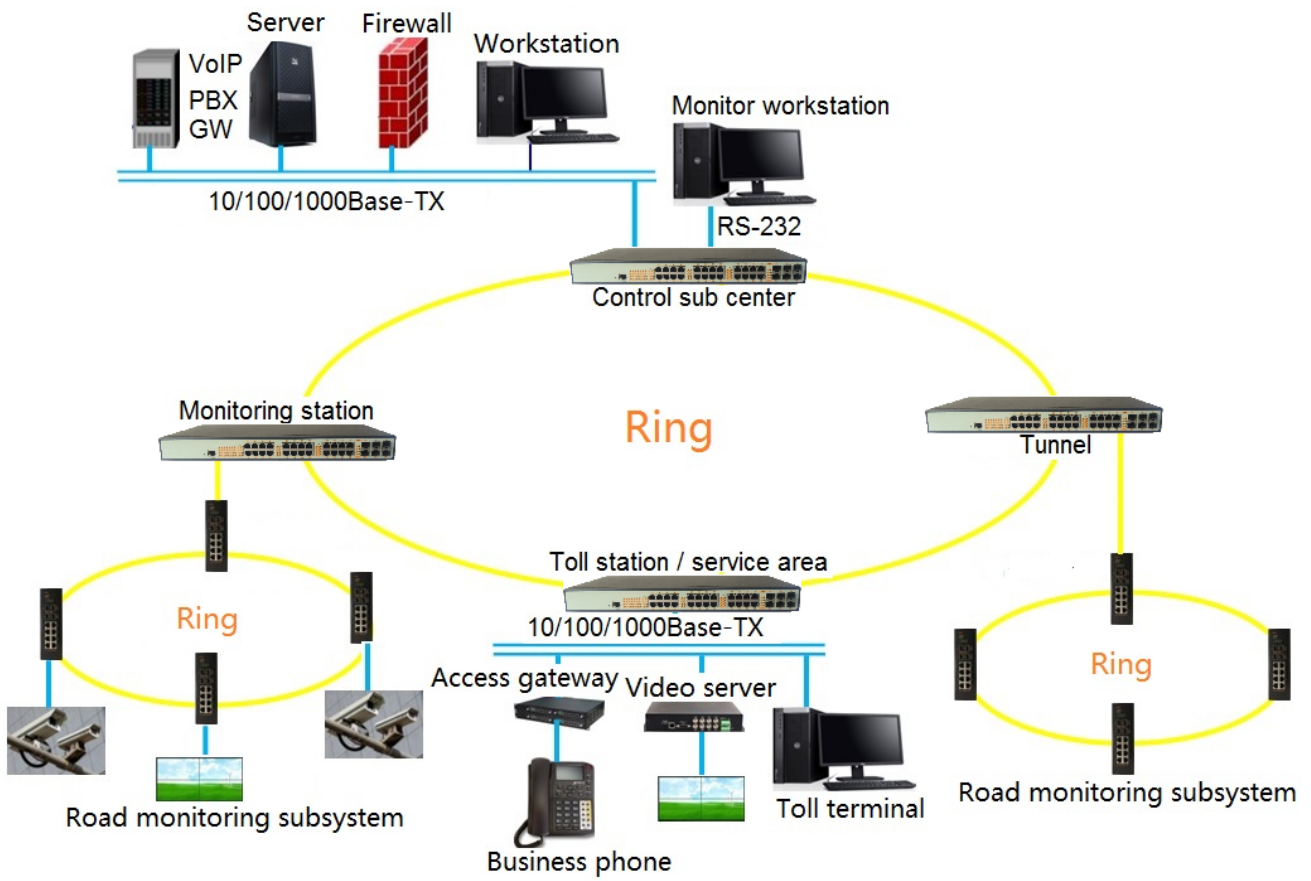
IEEE 802.1X	Port-Based, MAC-Based
ACL	up to 256 entries for L2 / L3 / L4 L2 : Mac address SA/DA/VLAN L3: IP address SA/DA, Subnet L4: TCP/UDP
RADIUS	Authentication & Accounting
TACACS+	Authentication & Accounting
SSH	Supported

Management

CLI	
CLI	Cisco® like CLI
Web Based Management	
Telnet	Server
SNMP	V1, V2c, V3
SW & Configuration	HTTP
Upgrade	
RMON	RMON I (1, 2, 3, 9 group), RMON II
MIB	RFC1213 MIB II, Private MIB
DHCP	Server, Client, Relay, Snooping, Snooping option 82, Relay option 82
IP Source Guard	Supported
Port Mirroring	Supported

Application



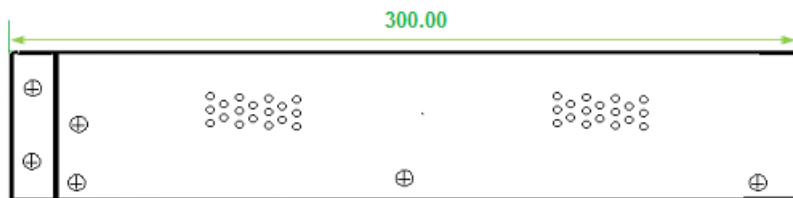


Dimension

Front View

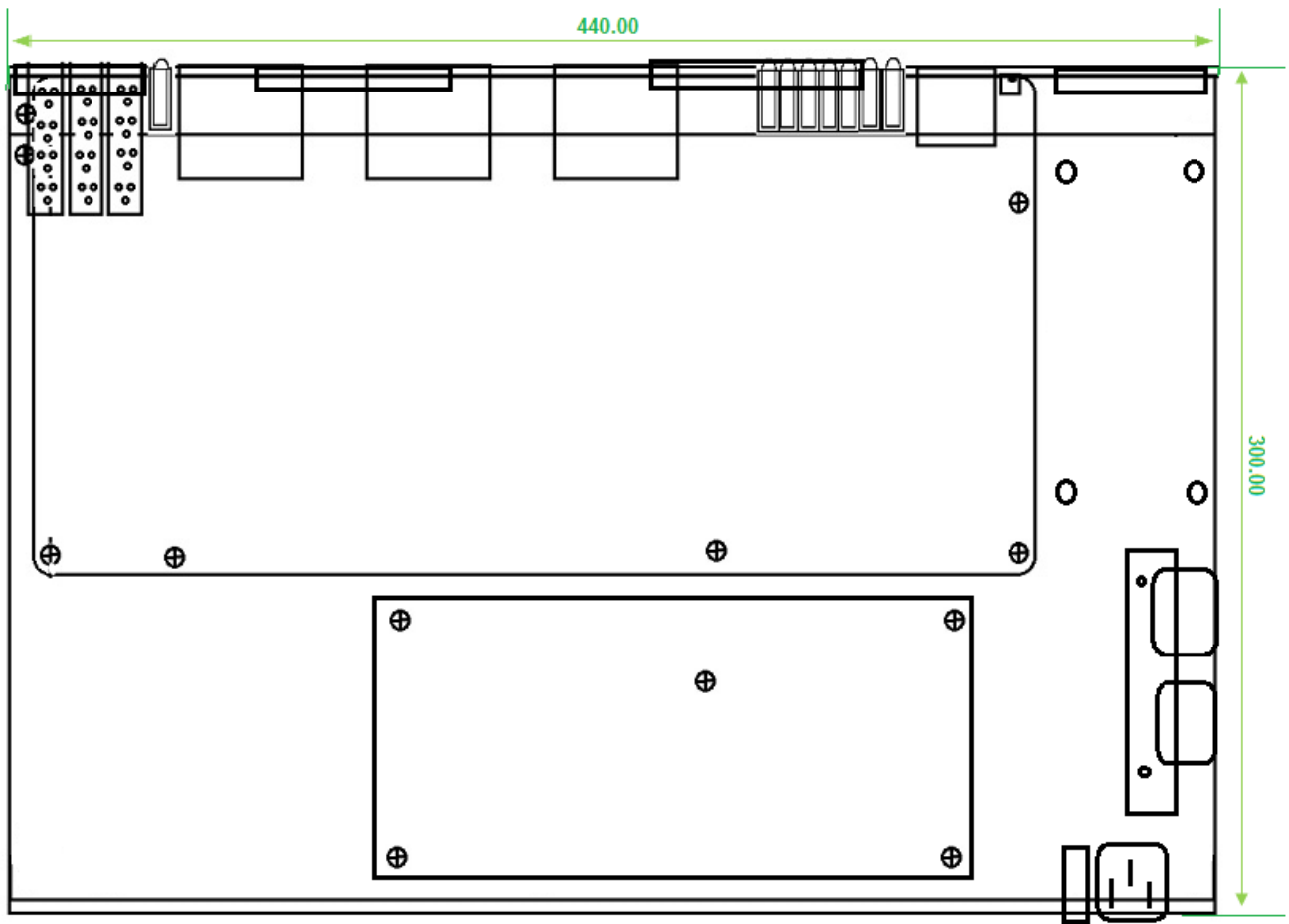


Side View



Top view





Ordering information

Model	Managed	PoE	Gigabit LAN Switch (UTP 10/100M/1G, SFP 100M/1G)						CE FCC	Operating temperature
	L2+		# port	PoE	AC,Power module(default/option)	UTP	Combo	SFP		
PS2460GM	•	•	26	24	300w/450w	24	4	6	•	0 to 55°C
PS2440GM	•	•	26	24	300w/450w	24	2	4	•	0 to 55°C
PS2420GM	•	•	26	24	300w/450w	24	0	2	•	0 to 55°C
PS1660GM	•	•	22	16	200w/300w	16	0	6	•	0 to 55°C
PS1640GM	•	•	20	16	200w/300w	16	0	4	•	0 to 55°C
PS1620GM	•	•	18	16	200w/300w	16	0	2	•	0 to 55°C

