



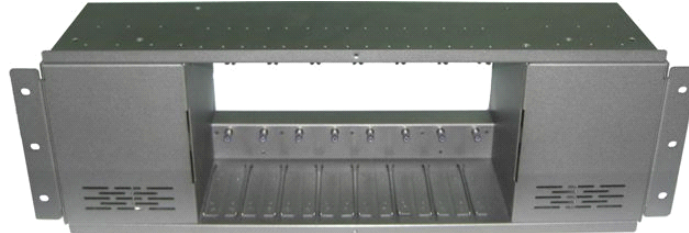
Hybrid Fiber PoE Extender PF100 (TX/RX)



PF100T: Transmitter



PF100R: Receiver with PoE+ output
PF100R-ODU (outdoor enclosure)



PPS800: 8-slot 19" 500w power chassis

Delivering Power/Fiber over 3,400 ft (1 km) with PoE+ (30 Watt) Output

In use of hybrid cable (fiber and copper conductor), PF100 can deliver integrated power and data over a distance of 3,400 ft (1km) with PoE and PoE+ power output to perform Power over Ethernet cable of 100 meters for IP surveillance application.

Centralized management of IP Surveillance application

A 19" cabinet power shelf can accommodate up to 8 PF100T which enables IT manager to centrally manage the remote IP/power requirement.

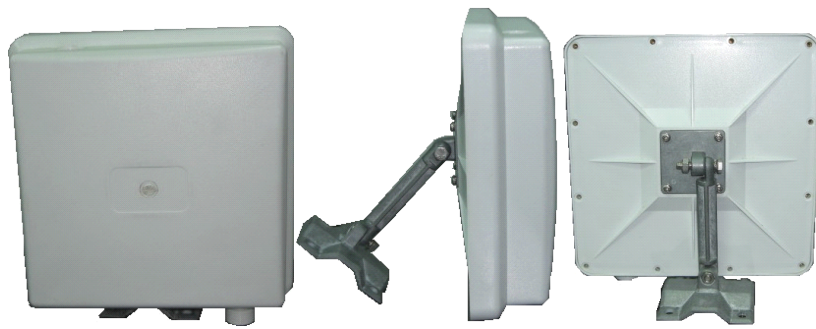
Outdoor enclosure (PF100R-ODU) and harden working environment supported

Optionally PF100R is housed into IP-66 rated outdoor housing for harden working environment of -40C to 70C degree.

Yoda Communications, Inc. www.yoda.com.tw

2F, No. 3-1, Industry East Road IX, Science Based Industrial Park, HsinChu, Taiwan

Tel:+886-3-563-2323 Fax:+886-3-563-6420



PR100R-ODU

FEATURES

- ◆ Comply with IEEE 802.3x 10Base-T, 100Base-TX & 100Base-FX standard
- ◆ One Fiber Optic LC connector and one RJ-45 connector
- ◆ 100 Mbps Data Transfer Rate (Full Duplex)
- ◆ Transmission distances up to 2km, Multimode fiber
- ◆ Supports auto-negotiation with 10M/100M, full/half duplex capability
- ◆ Support auto MDI-MDIX function in Twist Pairs side
- ◆ LED indicators allow for visual verification of power, fiber and LAN activity
- ◆ Compact metal casing with rack mount facility or IP-66 rating outdoor
- ◆ Harden working environment supported
- ◆ Supports IEEE 802.3at/af PoE+ to extend fiber/power distances up to 1,000m

SPECIFICATION

Standard	IEEE 802.3 10Base-T, IEEE 802.3u 100Base-TX, 100Base-FX
PoE	IEEE 802.3at/af
Interface	10/100Base-T RJ-45 Port x 1 & 100Base-FX Port (LC) x 1
Switching Method	Store and forward
Data Transfer Rate	100 Mbps-Full duplex
MAC Table	1K
Memory Buffer	128Kb RAM
Dimensions	133 x 90 x 28mm (D x W x H)
Weight	0.5 kg
Temperature	0~50°C (Operating), -40°C~70°C (optional PF100R-ODU) 0~70°C (Storage)
Humidity	10~90% non-condensing
Power	Ext. Power Supply, DC 56V, 1.2A Power consumption: 65 W

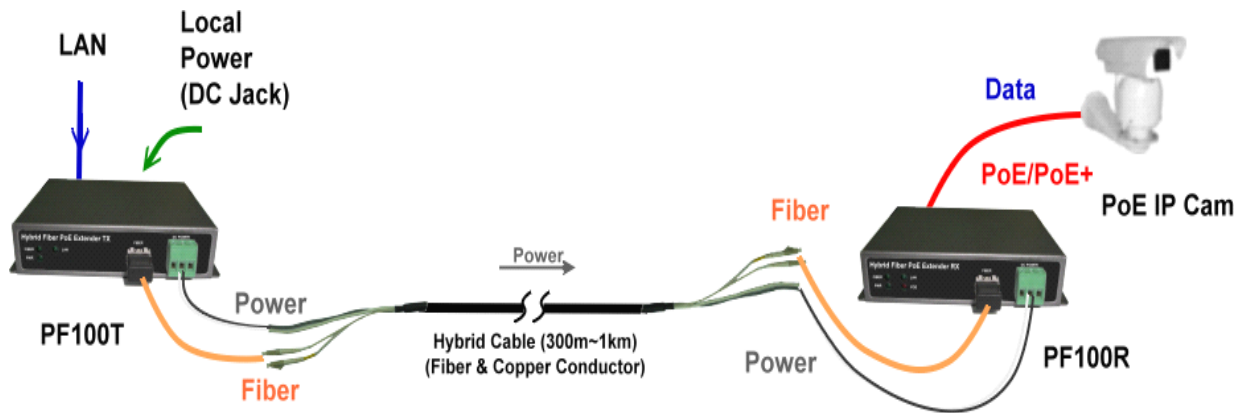
Yoda Communications, Inc. www.yoda.com.tw

2F, No. 3-1, Industry East Road IX, Science Based Industrial Park, HsinChu, Taiwan

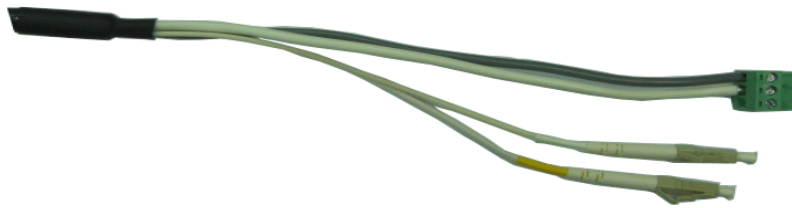
Tel:+886-3-563-2323 Fax:+886-3-563-6420



APPLICATION



FIBER/POWER DISTANCE / POE OUTPUT TABLE



Hybrid Cable(HC)	Conductor Gauge	PoE+ Output	PoE Output
HC12	12 AWG	1,000m	2,000m
HC18	18 AWG	450m	700m

ORDERING INFORMATION

Model	Specification
PF100T	Hybrid Fiber PoE Extender Transmitter
PF100R	Hybrid Fiber PoE Extender Receiver
PF100R-ODU	Receiver with IP-66 outdoor enclosure, -40°C~70°C
PPS800	8-slot 19" Power Chassis, 500W power
HC12-2Km	Hybrid Cable, 12AWG, 2000m in length
HC12-1Km	Hybrid Cable, 12AWG, 1000m in length
HC18-800	Hybrid Cable, 18AWG, 800m in length
HC18-500	Hybrid Cable, 18AWG, 500m in length