

LS6204GM Gigabit Enterprise Managed Switch



Description

LS6204GM Enterprise Ethernet switch with management function is designed to meet rigorous mission critical applications, such as factory automation, intelligent transportation system (ITS), process control and also suitable for many military and utility market applications where environmental conditions exceed commercial product specifications. LS6204GM Gigabit Managed Switches provides a reliable infrastructure for your enterprise automation applications.

LS6204GM support the Ethernet Ring Protection protocol, healing time can be less than 20ms, VLAN, QINQ, STP/RSTP, support QOS, ACL multicast, rich two layer exchange function, while providing CLI, Telnet, SSH, Http, Https and other management and network management software based on SNMPv1/v2c/v3. The switch can be managed centrally and conveniently by 'H-View' Element Management System, the whole network equipment can be managed at central office.

Features

- ◆ Comply with IEEE 802.3, 802.3u, 802.3/ab 10/100/1000BASE-T and other international standards
- ◆ Support cable fault detection, a key to restart and restore the factory function
- ◆ Comply with CE, FCC and other related standards
- ◆ Support spanning tree (STP), fast spanning tree (RSTP) protocol and multi spanning tree (MSTP) protocol
- ◆ Support VLAN 802.1Q, basic QinQ and flexible QinQ, support up to VLAN 4K table entry
- ◆ Support port aggregation and 1:1 port protection
- ◆ Support IEEE802.3ah, IEEE802.1ag and Y.1731 OAM Management Protocol
- ◆ Support for unified network management and Web Server configuration based on SNMP protocol
- ◆ Support Dying Gasp remote equipment fail alarm
- ◆ Support Ethernet ring network protocol ERPS, support ring protection protocol, protection switching time is less than 20ms
- ◆ Based on port aggregation, linear protection based on G.8031 protocol and the protection of the ring network based on G.8032 protocol;
- ◆ Support port loopback detection and device online upgrade

Specification

Standards

IEEE 802.3	10Base-T 10Mbit/s Ethernet
IEEE 802.3u	100Base-TX, 100Base-FX, Fast Ethernet
IEEE 802.3ab	1000Base-T Gigabit/s Ethernet over twisted pair
IEEE 802.3z	1000Base-X Gigabit/s Ethernet over Fiber-Optic
IEEE 802.1d	STP (Spanning Tree Protocol)
IEEE 802.1w	RSTP (Rapid Spanning Tree Protocol)
IEEE 802.1s	MSTP (Multiple Spanning Tree Protocol)
ITU-T G.8032 /Y.1344	ERPS (Ethernet Ring Protection Switching)
IEEE 802.1Q	Virtual LANs (VLAN)
IEEE 802.1X	Port based and MAC based Network Access Control, Authentication
IEEE 802.3ad	Link aggregation for parallel links with LACP(Link Aggregation Control Protocol)
IEEE 802.3x	Flow control for Full Duplex
IEEE 802.1ad	Stacked VLANs, Q-in-Q
IEEE 802.1p	LAN Layer 2 QoS/CoS Protocol for Traffic Prioritization
IEEE 802.1ab	Link Layer Discovery Protocol (LLDP)
IEEE 802.3af	PoE (Power over Ethernet) (for PoE model LS6204GMP only)
IEEE 802.3at	PoE+ (Power over Ethernet enhancements) (for PoE model LS6204GMP only)

Protocols

IGMPv1/v2/v3, GMRP, GVRP, SNMPv1/v2c/v3, DHCP
Server/Client, , TFTP, SNTP, SMTP, RARP, RMON, HTTP, HTTPS,
Telnet, Syslog, DHCP Option 66/67/82, SSH, LLDP, IPv6, NTP

Switch Properties

Priority Queues:	8
VLAN ID Range:	VID 1 to 4094
IGMP Groups:	2048
MAC Table Size:	8 K
Packet Buffer Size:	4 Mbit
Switching capacity	12Gbps

Interface

RJ45 Ports:	4 10/100/1000M Base T adaptive
Fiber Ports:	2 100/1000M Base SFP
Console Port:	RS-232 (RJ-45)
Button	Reset button



Certification

EMC	CE
EMI (Electromagnetic Interference)	FCC Part 15 Subpart B Class A, CE
EMS (Electromagnetic Susceptibility) Protection Level	EN61000-3-2 EN61000-3-3 EN61000-4-2 (ESD) EN61000-4-3 (RS) EN61000-4-4 (Burst) EN61000-4-5 (Surge) EN61000-4-6 (CS) EN61000-4-8 (PFMF, Magnetic Field) Field Strength E55032 EN55024 CISPR 32 EN60950-1
FCC	PART15B

Operation

Temperature	0 to 50°C
Humidity	10 ~ 90% non-condensing

Power

AC	100~240 VAC (option for AC/DC, or DC)
----	---------------------------------------

Dimension

Size(W x H x D)	250 x 40 x 150 mm
-----------------	-------------------

Software features

VLAN	VLAN IEEE 802.1q VLAN, up to 4094 802.1Q VLAN VID IEEE 802.1q VLAN, up to 4094 Groups IEEE 802.1ad Q-in-Q MAC-based VLAN, up to 256 entries IP Subnet-based VLAN, up to 128 entries Protocol-based VLAN (Ethernet, SNAP, LLC), up to 128 entries VLAN Translation, up to 256 entries GVRP (GARP VLAN Registration Protocol) MVR (Multicast VLAN Registration)
Link Aggregation	Static (Hash with SA, DA, IP, TCP/UDP port), up to 14 trunk group Dynamic (IEEE 802.3ad LACP), up to 14 trunk group Per group up-to 8 port
Spanning Tree	IEEE802.1d STP, IEEE802.1w RSTP, IEEE802.1s MSTP



Loop Protection Supported
ITU-T G.8032 / Y.1344 Recovery time <20ms

ERPS

QoS

Class of Service IEEE802.1p 8 active priorities queues for per port

Traffic Classification QoS IEEE802.1p based CoS

IP Precedence based CoS

IP DSCP based CoS

QCL(QoS Control List): Frame Type, Source/

Destination MAC, VLAN ID, PCP, DEI

QCE(QoS Control Entry): Protocol, Source IP, IP

Fragment, DSCP, TCP/UDP port number

Bandwidth Control for Per port based

Ingress

Bandwidth Control for Per port based Per queue / Per port shaper

Egress

DiffServ Remarking

Storm Control Unicast, Broadcast, Multicast

IP Multicasting

IGMP / MLD Snooping IGMP Snooping v1, v2, v3 / MLD Snooping v1, v2 Port Filtering Profile
Throttling, Fast Leave Maximum Multicast Group : up to 1022 entries
Query / Static Router Port

Security

IEEE 802.1X Port-Based, MAC-Based

ACL up to 256 entries for L2 / L3 / L4

L2 : Mac address SA/DA/VLAN

L3: IP address SA/DA, Subnet

L4: TCP/UDP

RADIUS Authentication & Accounting

TACACS+ Authentication & Accounting

SSH Supported

Management

CLI

CLI Cisco® like CLI

Web Based Management

Telnet Server

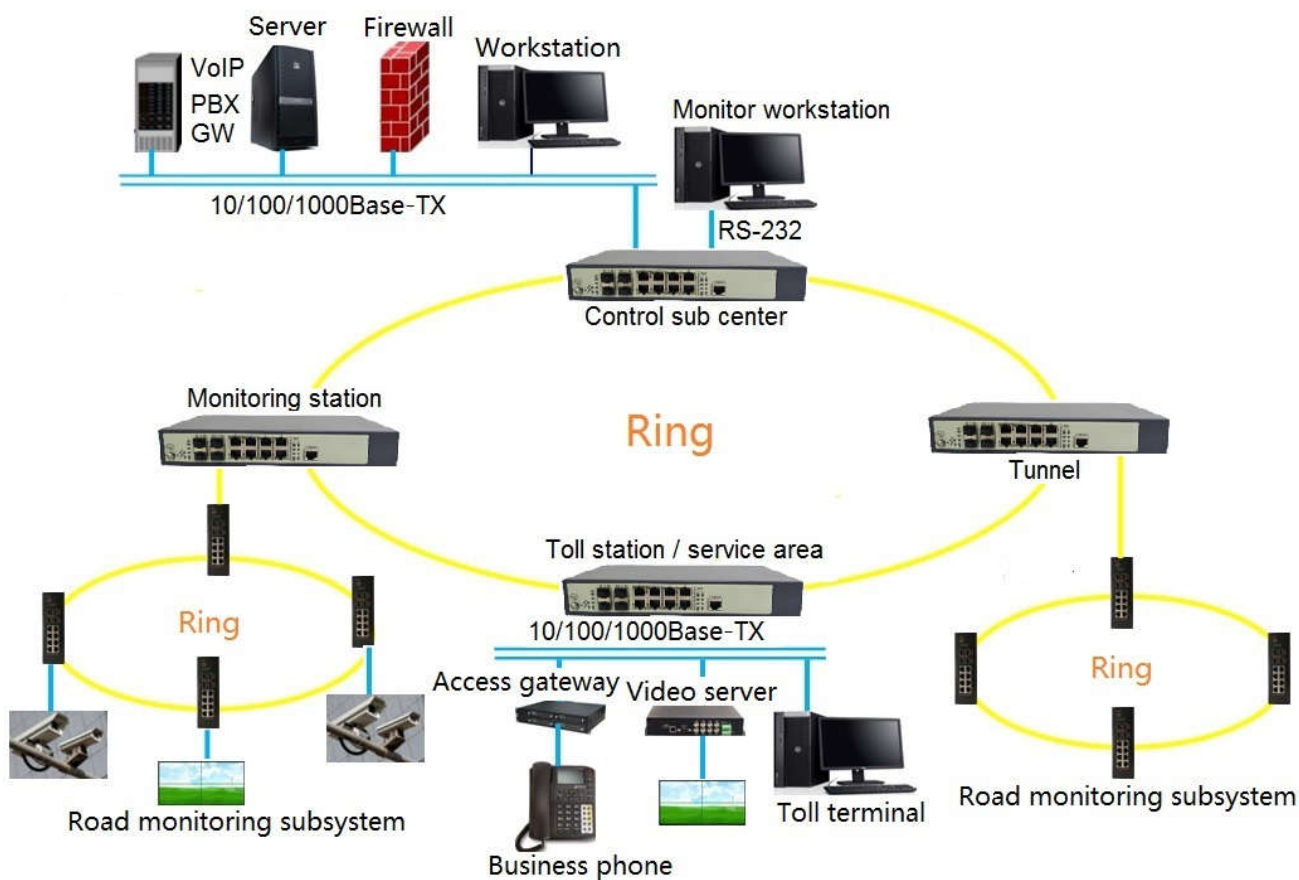
SNMP V1, V2c, V3

SW & Configuration HTTP



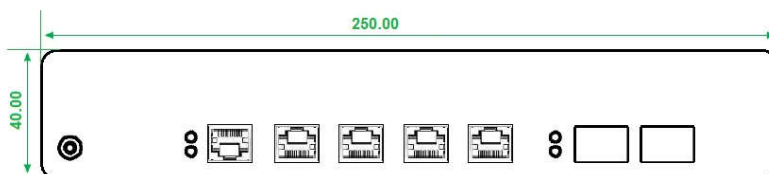
Upgrade	
RMON	RMON I (1, 2, 3, 9 group), RMON II
MIB	RFC1213 MIB II, Private MIB
DHCP	Server, Client, Relay, Snooping, Snooping option 82, Relay option 82
IP Source Guard	Supported
Port Mirroring	Supported

Applications



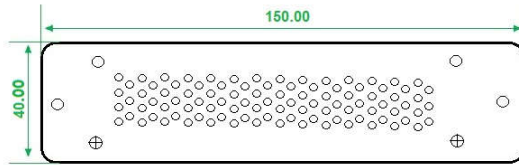
Dimensions

Front View



Side View





Rear view

