



DW642GCF

48VDC, Rugged 4 port Industrial Gigabit POE Switch

4x10/100/1000M TX PSE (802.3af/at POE+), 1xTX/SFP combo, 1x100/1000M SFP

Operating temp: -40°C to +75°C

OEM/ODM Options



Black



White

Available Case color



DW642GCF

Other Models also available:

DW642GF --- 4 port Giga POE+, with 4xGiga POE TX + 2xSFP

DW642GTF --- 4 port Giga POE+, with 4xGiga POE TX + TX + SFP

Introduction

This industrial high power POE+ is designed for 48VDC input sources, especially for IP surveillance, traffic monitoring and for a broad range of applications. It can be used as a stand-alone device for buses, trucks, and other vehicles for Surveillance purposes. And it also can be used to cascaded/daisy-chain to other devices to cover wider area through the SFP connection.

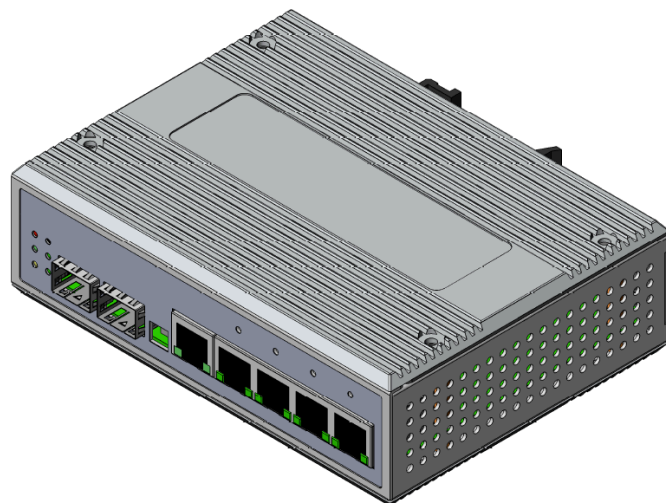


Specification

IEEE Standard	IEEE 802.3 10Base-T Ethernet IEEE 802.3u 100Base-TX Fast Ethernet IEEE 802.3ab 1000Base-T Gigabit Ethernet IEEE 802.3z 1000Base-X Gigabit Ethernet IEEE802.3x Flow Control and Back Pressure, IEEE802.3af for POE IEEE802.3at for POE+
Switch Architecture	Back-plane (Switching Fabric): 12Gbps
Data Processing	Store and Forward
Flow Control:	IEEE 802.3x Flow Control and Back Pressure
Jumbo Frame	9KB
MAC address Table Size	1K
Packet Buffer Size	1M
Network Connector :	5xRJ-45 10/100/1000BaseT(X) auto negotiation, 4 Giga POE+ 802.3at/af PSE port Auto MDI/MDI-X function, Full/Half duplex 2 x SFP 100/1000M BaseX
Network Cable	UTP/STP above Cat.5e Cable
	EIA/TIA-568 100-ohm (100m)
	Fiber Cable (Multi-mode):50/125um,62.5/125um Fiber Cable (Single-mode): 9/125um
Protocol	CSMA/CD
LED	PW1(Power 1) Green, PW2(Power 2) Green, ERR(Fault) Amber,
	TX/RJ-45 port: LNK (Link/Active) Green, SPD(Speed) 10/100(OFF) ,1000 (Green)
	SFP Fiber Per port: Link (Green) Active Flash
DIP Switch	DIP 1: OFF: Port 5 SFP (DEFAULT) ON: Port 5 TX DIP 2: OFF: SFP 1000M (DEFAULT) ON: SFP 100M
Reserve polarity protection	Present
Overload current protection	Present
Power Supply	Redundant Dual DC 48V-55V Power Input
Power Consumption	5.76W@48 VDC full load, Without POE

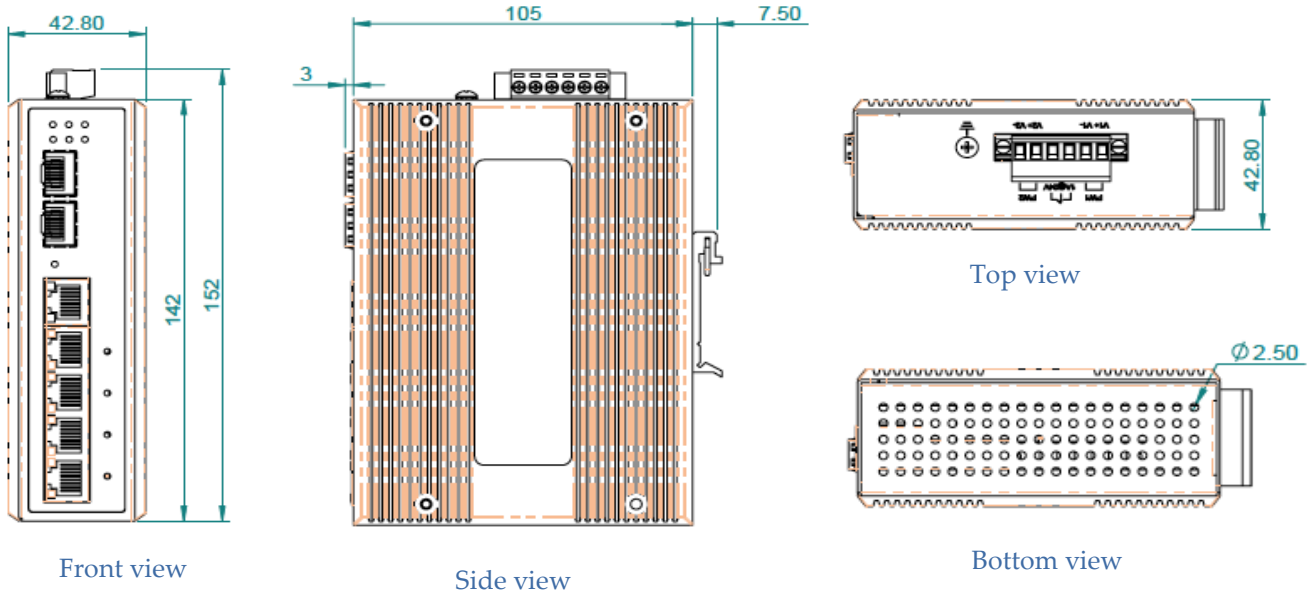


Alarm Relay Contact	Relay outputs with current carrying capacity of 1 A @24VDC, Relay in short circuit mode when 2 powers are connected. in open circuit mode when only one power supply is connected
POE power	POE power per port 30watts. Maximum 36Watts, per port. Total power 126Watts. Supports IEEE802.3at also backward compatible with IEEE802.3af.
Removable Terminal Block	Provide 2 Redundant power ,Alarm relay contact ,6 Pin Wire range: 0.34mm ² to 2.5mm ² Solid wire (AWG):12-24/14-22 Stranded wire(AWG): 12-24/14-22 Torque:5lb-In/0.5Nm/0.56Nm Wire Strip length: 7-8mm
Operating Temperature	-40°C~75°C fully tested with full load 30watts per port and 100M cable length.
POE efficiency	Voltage efficiency 97%.
Surface temperature	Surface temperature rises 3°C full load in a 75°C chamber, measured 78°C on aluminum housing
Operating Humidity	5% to 95% (Non-condensing)
Storage Temperature	-40°C~85°C
Housing	Rugged Metal ,IP30 Protection
Case Dimension (W X D X H)	142mmx43mmx105mm (LxWxD)
Installation mounting	DIN Rail mounting and Wall Mounting
EMC/EMS	CE, FCC, VCCI
EMI	FCC Part 15 Subpart B Class A, CE EN 55022 Class A





Housing Dimension



Applications

